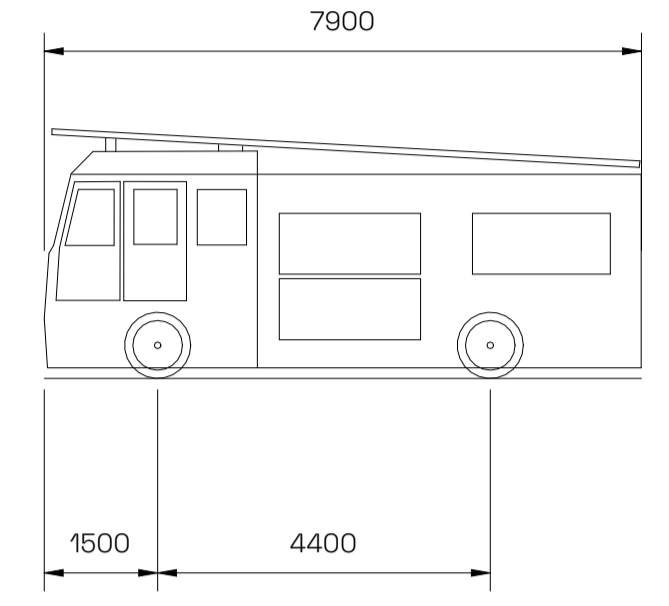
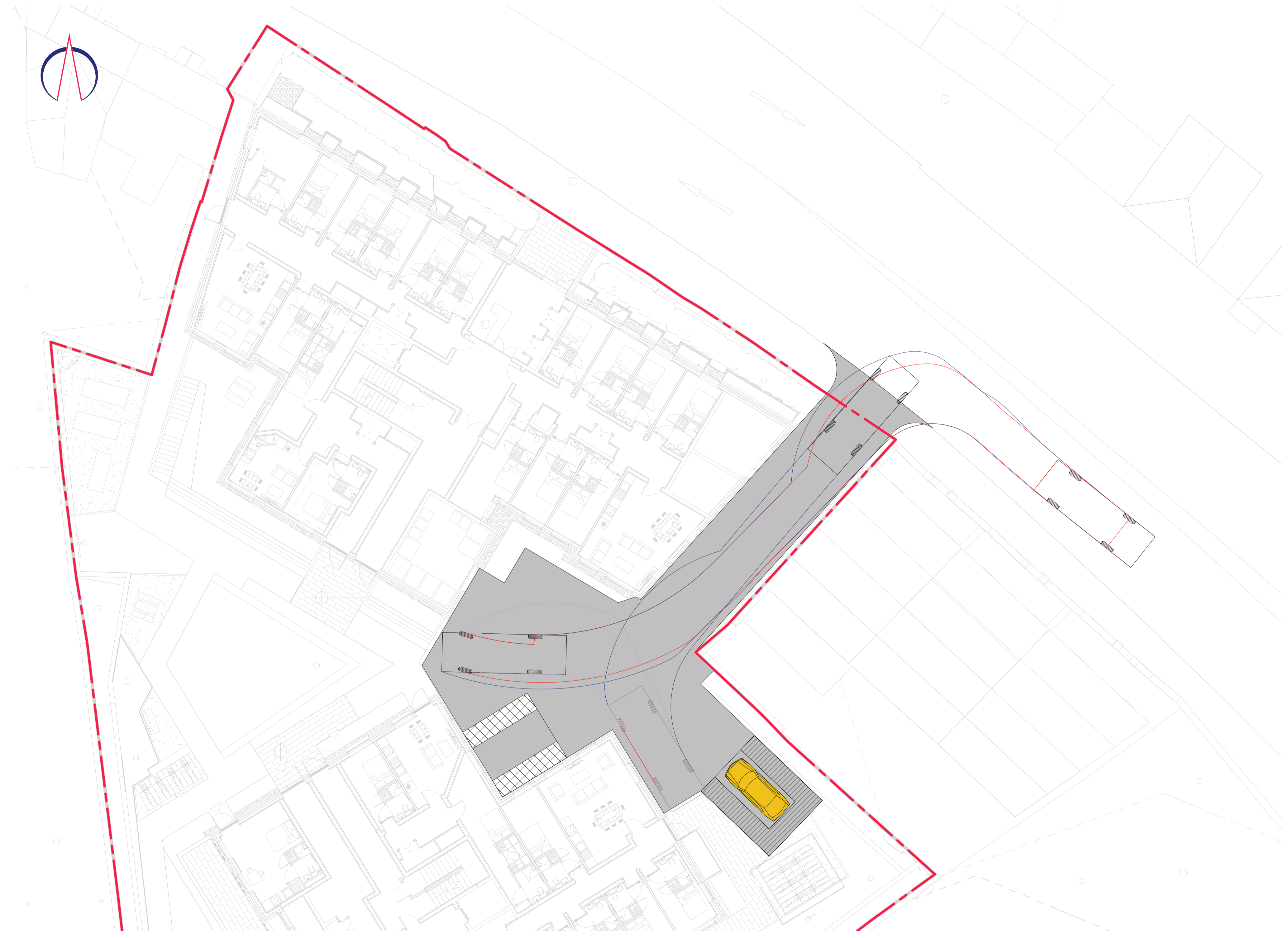


Notes:

1. THIS DRAWING IS TO BE READ IN CONJUNCTION WITH ALL RELEVANT ARCHITECTS AND ENGINEERS DRAWINGS AND SPECIFICATIONS.
2. DO NOT SCALE THIS DRAWING. ANY AMBIGUITIES, OMISSIONS AND ERRORS ON DRAWINGS SHALL BE BROUGHT TO THE ENGINEERS ATTENTION IMMEDIATELY. ALL DIMENSIONS MUST BE CHECKED / VERIFIED ON SITE.
3. ALL DIMENSIONS ARE IN MILLIMETRES UNLESS NOTED OTHERWISE.
4. FOR GENERAL NOTES REFER TO DRAWINGS DR-S-00001 TO DR-S-00003



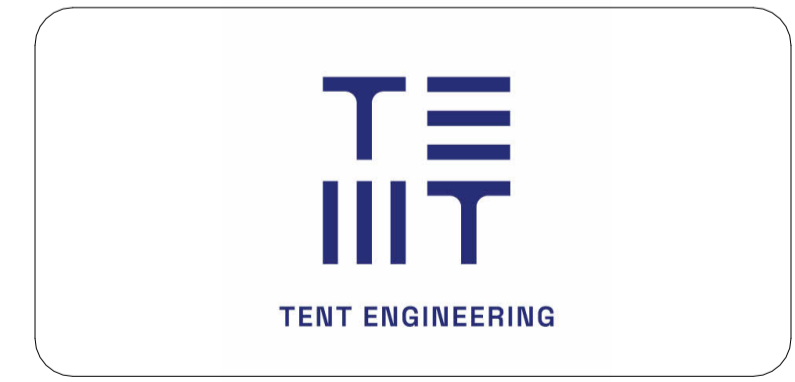
PUMPING APPLIANCE:

OVERALL LENGTH:	7.900m
OVERALL WIDTH:	2.500m
OVERALL BODY HEIGHT:	3.300m
MIN BODY GROUND CLEARANCE:	0.140m
TRACK WIDTH:	2.500m
LOCK-TO-LOCK TIME:	4.00s
CUR TO CURB TURNING RADIUS:	7.750m

FIRE AUTOTRACKING
1:150

PO3	ISSUED FOR PLANNING	AC	03.09.24
PO2	REVISED AS PER RSA COMMENTS	AC	13.08.24
PO1	ISSUED FOR PLANNING	AC	07.08.24
PO0	ISSUED FOR PLANNING	AC	14.05.24
REV	DESCRIPTION	BY	DATE

STATUS: INFORMATION



PROJECT: MERRION COMPOUND

TITLE: FIRE TENDER TRACKING

SCALE AT A1:	DATE:	DRAWN:	CHECKED:
As indicated	MAY 24	AC	DH
DRAWING NO:	REVISION:		
24042-X-L00-DR-TNT-TP-4003	P03		